

# Welcome to Suzi's activity book!

Suzi is going on a train journey to the nature reserve, with her Mum and Pickles the dog. But there are some important things she needs to learn along the way to help keep her Switched On and safe.

*We can all enjoy life's adventures when we pay attention to adults, learn the signs and stay Switched On.*



**Can you complete all of the activities in this book to keep Suzi safe on her journey?**

## Welcome to the Station!

Suzi's never been to a train station before. Can you help her by drawing a line to connect the pictures with the correct word below?



**The yellow line**

**Train Driver**

**Information board**

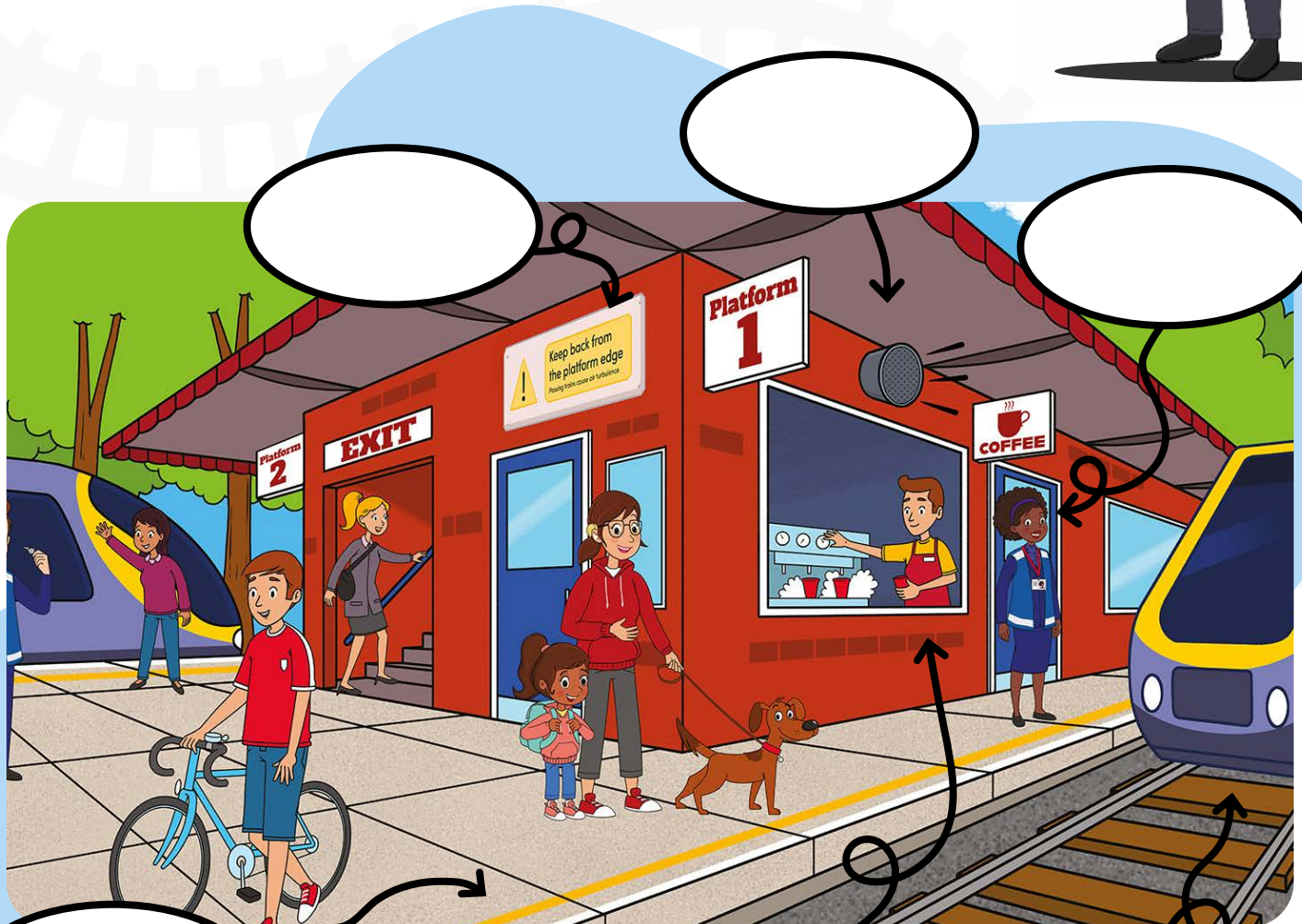
**A train**

# Getting to know the railway with Train Driver Tarj



*Let's get to know the railway together! As we do, make sure to keep an eye out for some important signs. Signs help us to stay Switched On and safe around the railway.*

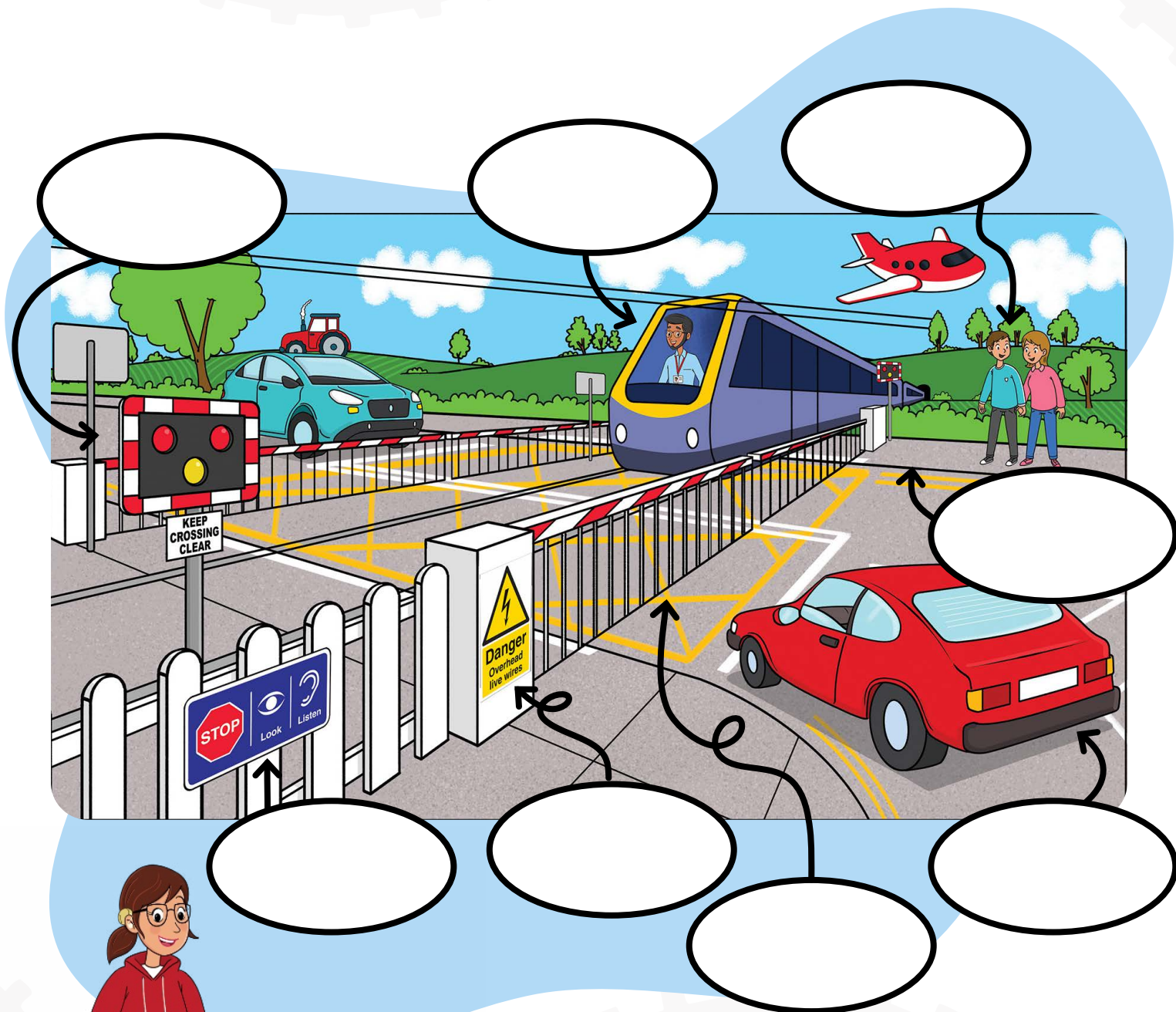
**Write in the circles what you think each part of the station is. Two of the circles point to signs. Can you identify which two?**





A level crossing is a place where the track and pavement or the track and road meet.

Write in the circles what you think each part of the picture is. Three of the circles point to signs. Can you identify which three?



Have you ever been to a level crossing before?

-----

What will you look out for next time you are at a level crossing?

-----

# Help Suzi understand the signs

Well done for spotting all the signs! **Now let's use our Switched On skills to fill in the gaps and tell Suzi what we need to do when we see each sign.**

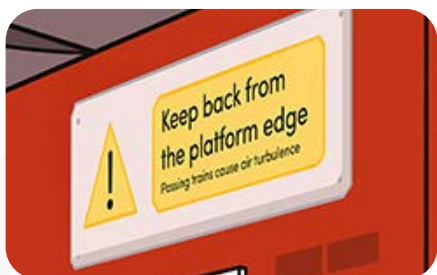
Flash

Electricity

Stop, look and listen

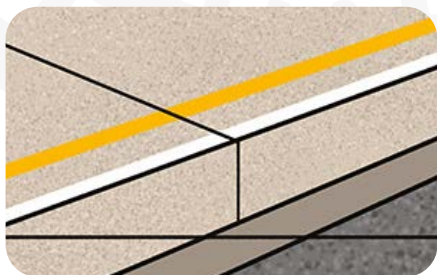
Yellow line

Keep back from the platform edge



This reminds us to \_\_\_\_\_ from the \_\_\_\_\_ . Not all trains stop at all stations and they travel very quickly.

It's always best to hold an adult's hand and stay back when you are waiting for a train at the station.



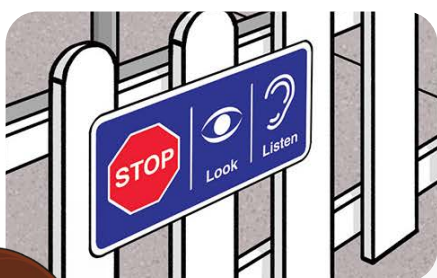
We need to stand behind the \_\_\_\_\_. It will keep us safe from fast moving trains and ensures we don't accidentally fall onto the tracks.

Remember to stand behind the yellow line to stay Switched On and safe!



This sign reminds us that there is often lots of \_\_\_\_\_ around the railways to make the trains move, which could be dangerous.

Remember, when we pay attention to the signs, we can stay safe around the railways.



This sign means we need to \_\_\_\_\_, \_\_\_\_\_ and \_\_\_\_\_ to make sure there are no trains coming and it's safe to cross.

We often find these signs at level crossings where the track and pavement or the track and road meet.



Different level crossings have different signs that we need to pay attention to, like this one! If the lights on this sign start to \_\_\_\_\_ we need to stop, and wait, away from the tracks.

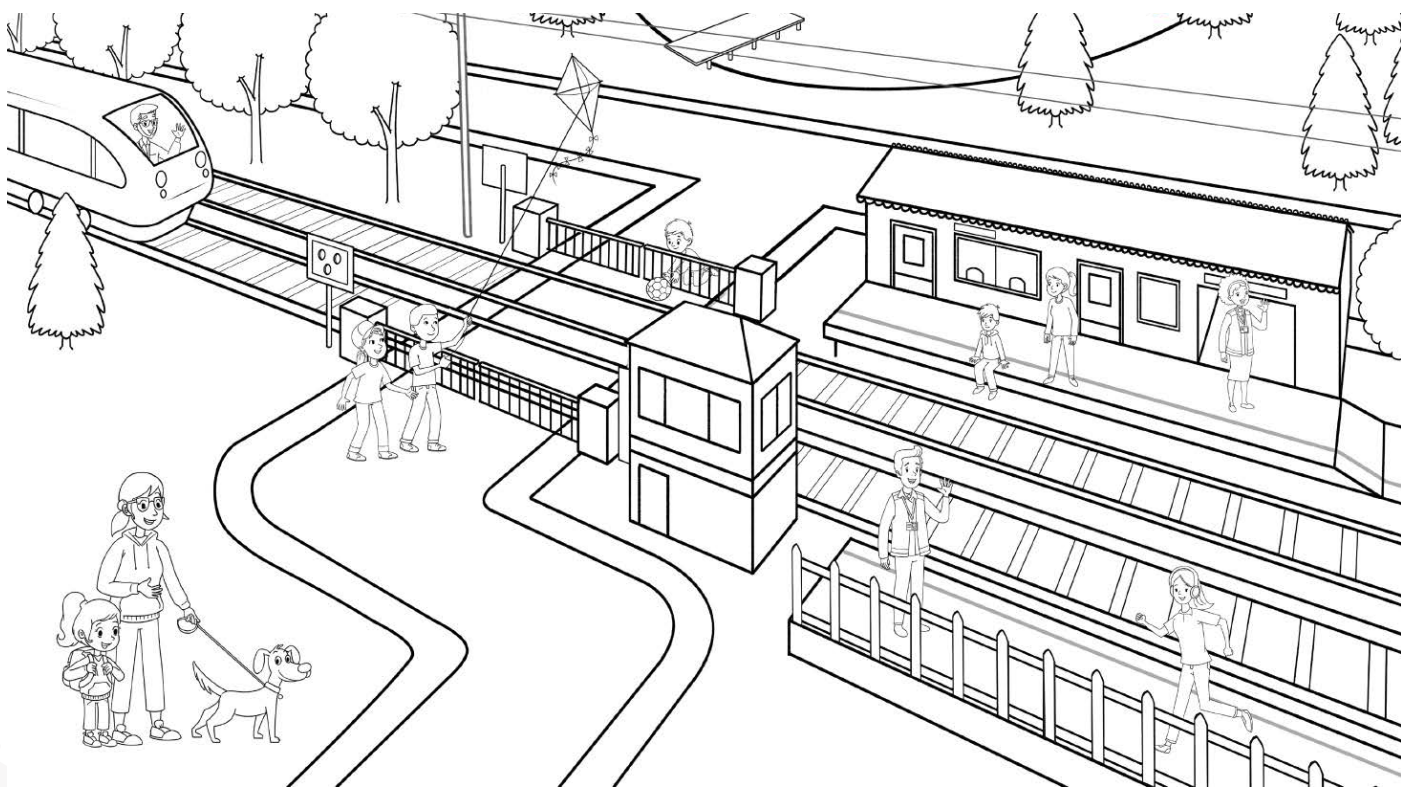
Sometimes there is a barrier that comes down to keep us away from the trains and the track.










Now put your Switched On skills to the test!  
Can you help Suzi spot the unsafe behaviours?

Colour in the map below! Can you **spot and circle the unsafe behaviours listed below** in the picture? There are five to find!



**Extension activity:** Which of the options below would be the safer choice for each of the unsafe behaviours? **Match them together.**

## Unsafe behaviours

-  A. Pair playing with a kite near the electric overhead wires
-  B. Boy reaching for his lost ball
-  C. Boy sat on the platform edge
-  D. Woman stood over the yellow line
-  E. Woman running on the platform.

## Safe behaviours

1. Leave the ball where it is
2. Play with the kite away from the tracks
3. Walk on the platform, paying attention to the signs
4. Stand back from the platform edge, behind the yellow line
5. Never sit on the platform edge, always stand behind the yellow line

**Correct answers**

A-2

B-1

5-10

D - 4

3  
-  
E